

# DATACARD® PB6500™ PASSPORT ISSUANCE SYSTEM

Exceptional security and low total cost of ownership



## COMPREHENSIVE PASSPORT PORTFOLIO

Government agencies and system integrators are rapidly making the enhanced Datacard® PB6500™ passport issuance system a preferred choice for passport programs worldwide. This highly efficient system is part of a comprehensive passport portfolio, which includes:

- **High-volume issuance.** The PB6500 system, the flagship of our passport issuance portfolio, brings efficiency, security and savings to centralized issuance operations.
- **Desktop issuance.** Our color inkjet passport system offers secure distributed issuance for new and replacement passports. Ideal for consulates, embassies and remote service locations.
- **End-to-end software.** We offer an integrated software platform for enrollment, identity verification, application approval, document issuance and post issuance management.
- **Intelligent supplies.** Datacard® Certified Supplies use exclusive patented Intelligent Supplies Technology™ to communicate with Datacard® systems. Patented radio frequency (RF) technology allow supplies to be identified as genuine, enabling unique features that optimize quality and performance. Our secure overlays enable operational prompts, which help prevent costly mistakes, enhance supply efficiency, and reduce overall supply costs.
- **Professional services.** Our secure identity experts can help with everything from design of secure passports and efficient operations to ongoing technical support.

## Exceptional document security and low total cost of ownership

The Datacard® PB6500™ passport issuance system offers a no-compromise combination of advanced technology and a low total cost of ownership. Innovative laser engraving and color inkjet printing capabilities empower government agencies to elevate passport quality and provide strong lines of defense against sophisticated and ever-changing security threats. Consistent and efficient production, reduced booklet waste and true field modularity all contribute to consistently low operating costs and long-term investment protection.

- **Document and data security.** The PB6500 system delivers a full complement of personalization capabilities, including Datacard® LinkJet™ security printing, Datacard® PersoCurve™ security feature, laser ablation, CLI, MLI and 3D photo. Because these elements are incredibly difficult to replicate, they can measurably improve document security. A variety of substrates can be used with laser engraving, including popular thin polycarbonate pages. Logical security features also provide strong protection for demographics, biometrics and other proprietary data — both in the personalization process and on the chip.
- **Configurable design.** A truly field-modular design allows the system to be configured to accommodate specific program requirements and work spaces, while protecting overall capital investment. Configuration flexibility and fiber laser technology, which requires no external power or special cooling, also minimize space requirements. New modules can be added to the system to allow for increased capacity or to incorporate new production technologies as they become available.
- **e-Passport issuance.** The system issues a variety of passport types, including e-passports. The chip encoding module is compatible with chips from a wide range of manufacturers and can implement ICAO-compliant Basic Access Controls (BAC), Extended Access Controls (EAC) and Supplementary Access Controls (SAC) security protocols.

**Datacard**Group

## POWERFUL ENHANCED DESIGN

The PB6500 passport issuance system combines true field modularity with exceptional reliability to keep operating costs low and production yields high. A variety of innovative features — including an enhanced laser engraving module — empower issuers to elevate the security of their passport booklets.

Linkjet security printing adds security by printing images and text across page spreads



### Elements of security

Everyday government agencies are challenged to fight against fraud, including counterfeits and alterations. The PB6500 system helps government agencies protect against these threats. Our Security at Time Of Personalization™ methodology provides a proven process of personalizing books with variable data using unique technologies during the production process that help reduce counterfeit passports. For example, LinkJet security printing gives you the ability to print over the spine of booklet pages and PersoCurve security feature allows variable text in a difficult to replicate wavy line. Laser engraving technology can also be used to add laser-ablated images and 3D photos during the issuance process. These Level 1 security features are easy to detect, yet difficult to counterfeit. Features such as these make it easier for field officers to identify falsified documents.

MLI capabilities add security elements to minimize forgery and counterfeiting



### Lowering your total cost of ownership

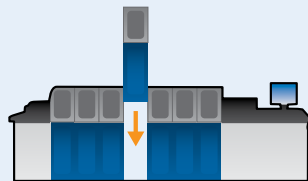
Total cost of ownership includes factors such as capital costs, labor, pure system speed, consumables and waste. The PB6500 system incorporates hundreds of features that have been specifically designed to help minimize these costs. For example, a highly reliable leafing module helps reduce booklet loading errors, print jams and other production issues that often result in wasted booklets. Datacard® patented Intelligent Supplies Technology™ optimizes usage of consumables and provides operator prompts to increase overall yields and reduce downtime. Together, these features contribute to a lower total cost of ownership.

The new PersoCurve security feature adds a security element that is difficult to replicate



### System Capabilities

The PB6500 system offers a full range of personalization capabilities. True field modularity protects capital investment through scalability and upgradeability.



#### Controller

Manages the entire issuance process from a single and highly secure point of control



#### Input

Reliably feeds booklets into the system



#### Leafing

Automatically opens booklets to the appropriate page for personalization



#### Number Perforation

Uses a laser to drill conical alpha/numeric characters through the entire booklet, from the data page to the back cover for added security



#### Chip Encoding

Securely encodes a wide range of passport chips

# A MODEL OF EFFICIENCY

The PB6500 system features advanced technologies that maximize efficiency and drive down total cost of ownership.

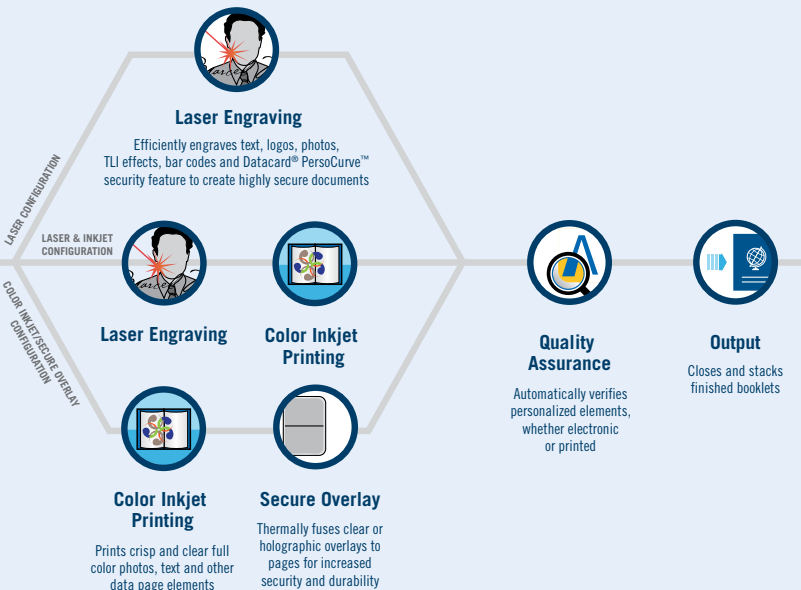
- **Reliable booklet leafing.** Opens booklets to the correct page every time to minimize expensive waste.
- **Fiber laser technology.** Laser engraving components offer long-life performance, high reliability and a combination of energy and space savings.
- **Color inkjet printing.** A robust print engine delivers crisp, clear text and images.
- **Simulator software.** This application reduces risk and implementation costs by enabling integration and setup in a simulated production environment prior to deployment.
- **High-capacity supplies.** Higher yield supplies with patented Intelligent Supplies Technology™ measurably reduce job interruptions, optimize system up-time and provide supply conservation.

## Datacard® Patented Intelligent Supplies Technology™

Datacard® secure thin film overlays provide essential durability and security for passports containing inkjet-printed elements. Our thin film overlays meet ICAO industry standards, providing durable document protection, fraud prevention and extend the passport life. Our secure thin film overlay offering includes a full suite of technically advanced optical variable device security features. We provide consultative services for best practices in security design: (Overt/Level 1; Covert/Level 2; and Forensic/Level 3) for a cost-effective passport issuance program.

## Global service and support

Datacard Group provides application engineering support to customize the PB6500 system and accommodate the unique requirements of each passport program. Strong business ethics help ensure there are no hidden costs. Our focus is to help you build the most secure and efficient solution for your program.



## Quality and security

The Datacard PB6500 system contributes to high security, high quality and lower total cost of ownership.





## TRUSTED GOVERNMENT SOLUTIONS FOR MORE THAN 40 YEARS

### Expert deployment, minimized risk

Datacard Group collaborates with industry organizations and standards groups, such as ISO and ICAO. Our deep understanding of industry standards and best practices results in secure identity solutions that meet both technical and market requirements. Our experience implementing secure credential programs around the world allows us to help customers deploy highly efficient programs and minimize program risk. Every day, our solutions are used to issue more than 15 million cards and smart cards and tens of thousands of passports.

### Module Specifications

PB6500 Module	Current Draw	Heat Output	Weight
System Controller	0.79 Amps at 230V	594 BTUs per hour	232.0 lbs (105.2 kg)
Passport Input	0.31 Amps at 230V	245 BTUs per hour	100.0 lbs (45.4 kg)
Booklet Leafing	0.64 Amps at 230V	502 BTUs per hour	123.0 lbs (55.8 kg)
Chip Encoding	0.74 Amps at 230V	566 BTUs per hour	112.0 lbs (51.0 kg)
Laser Engraving	1.30 Amps at 230V	871 BTUs per hour	155.0 lbs (71.0 kg)
Color Inkjet Printing	0.53 Amps at 230V	350 BTUs per hour	190.0 lbs (86.2 kg)
Secure Overlay	1.96 Amps at 230V	1,539 BTUs per hour	123.0 lbs (55.8 kg)
Quality Assurance	1.75 Amps at 230V	1,373 BTUs per hour	105.0 lbs (47.6 kg)
Booklet Closing	0.39 Amps at 230V	308 BTUs per hour	90.0 lbs (40.8 kg)
Passport Output	0.37 Amps at 230V	287 BTUs per hour	100.0 lbs (45.4 kg)

### Key System Specifications

Rated Speed	Up to 200 passports per hour
Operating System	Microsoft® Windows® 7, 64 bit (Available 1st Qtr, 2013)
Maximum Configuration	33 modules
Laser Classification	Class 1 laser product
Passport Booklets	ICAO 9303 compliant (88mm x 125mm), maximum spine thickness of 6.5mm; supports ID-3 ICAO 9303 compliant booklets; alternative sizes may be available upon request
System Height	50.1 in. (127.3cm) to top of module
System Depth	33.8 in. (85.85cm)
Electrical Requirements	230V, 50/60 Hz, 12 Amps
Operating Requirements	Room temperature: 65° to 80° F (18° to 27° C); Humidity: 20% to 85% (non-condensing)
Storage Requirements	Room temperature: -50° to 130° F (-46° to 54° C); Humidity: 0% to 100% (non-condensing)
Agency Approvals	FCC and CE Compliant, RoHS compliant

## DatacardGroup

### CORPORATE HEADQUARTERS

Minnetonka, MN  
+1 952 933 1223  
info@datacard.com

### AMERICAS

Denver, CO  
+1 303 803 1020  
sales@instantissuance.com

### ASIA PACIFIC

Hong Kong  
+852 2866 2613  
asiapacific@datacard.com

### EUROPE, MIDDLE EAST & AFRICA

Hampshire, UK  
+44 (0) 1489 555 600  
uksales@datacard.com